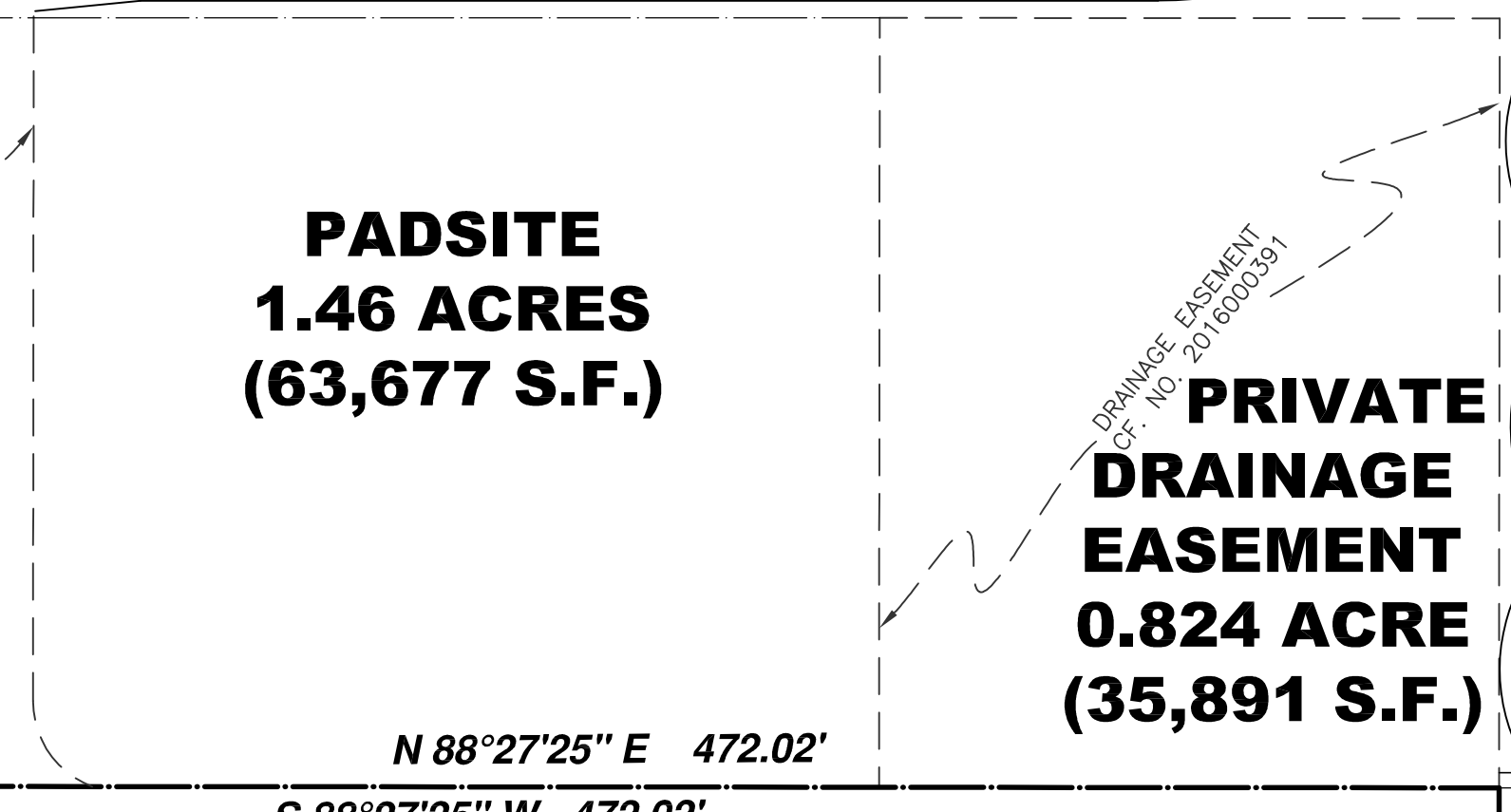
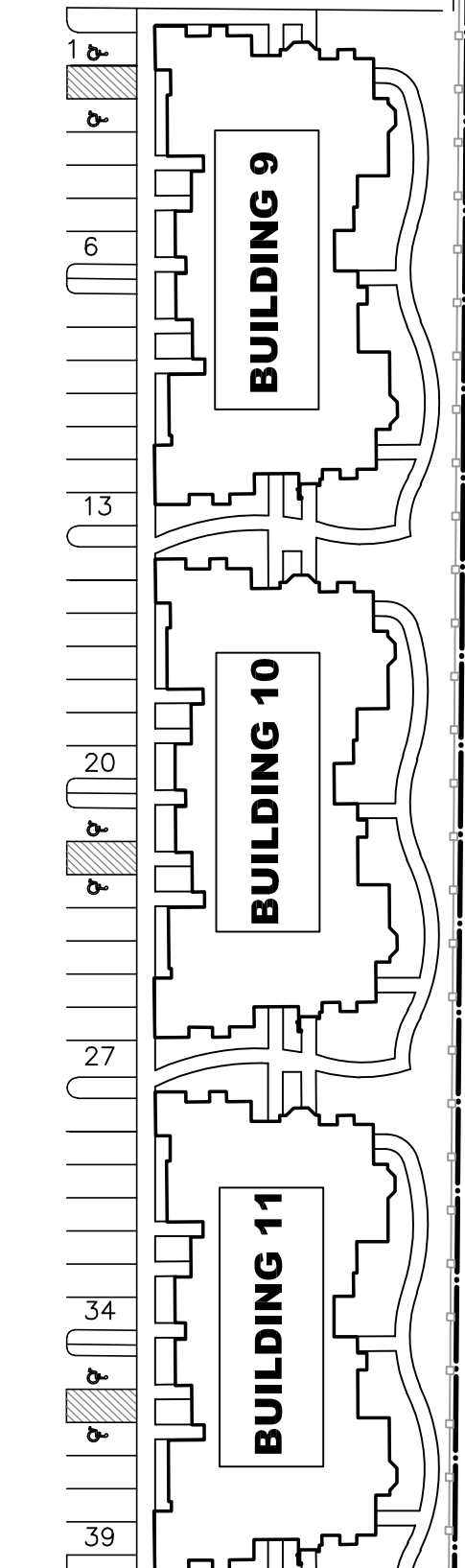
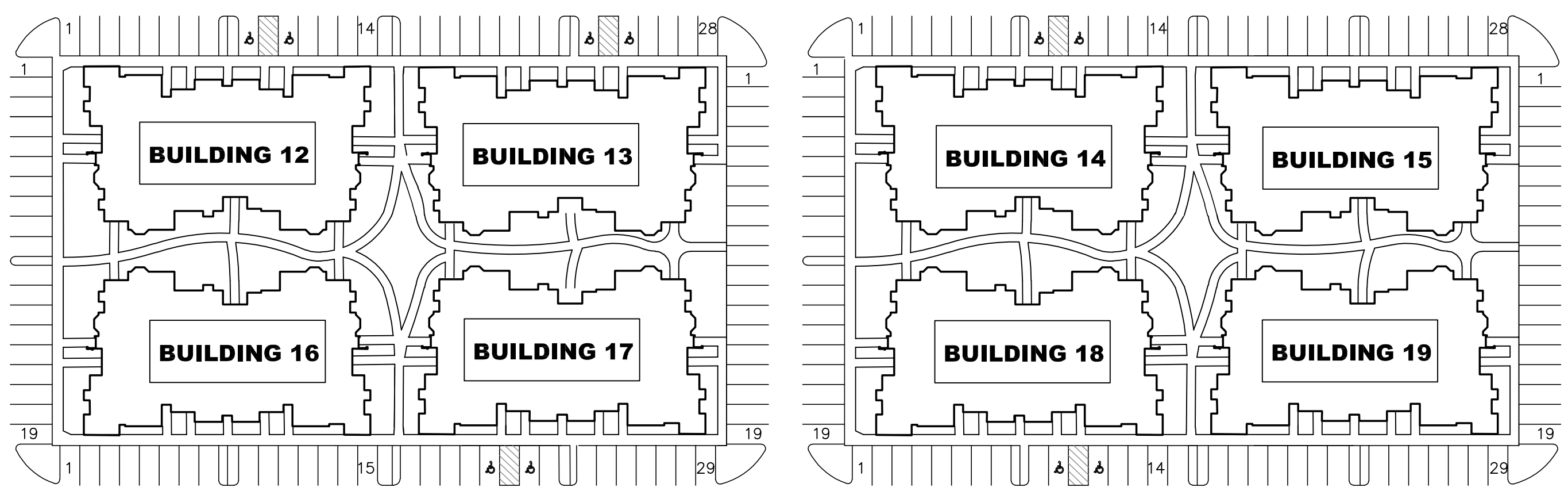
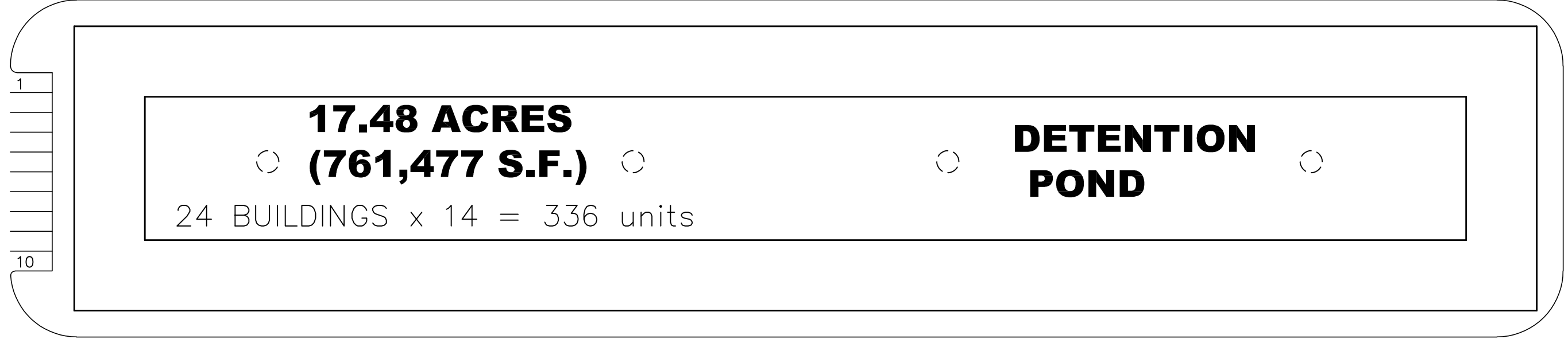
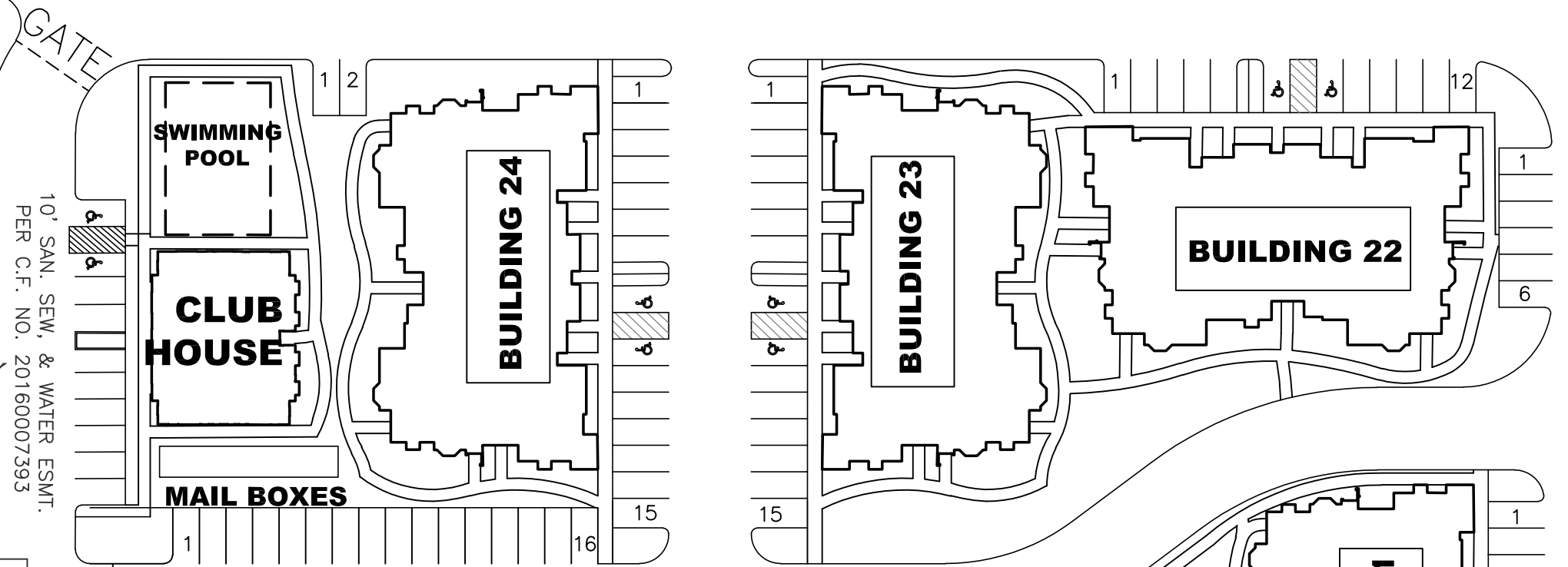
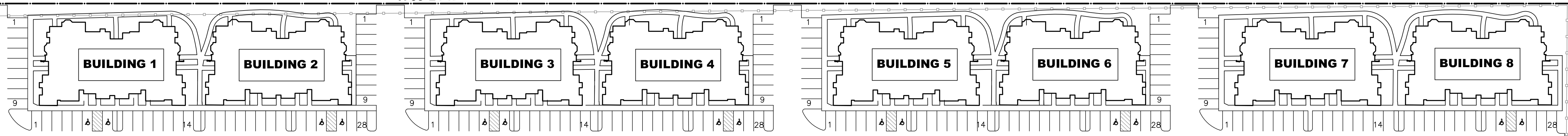


CARTER ROAD
(50.0' PUBLIC R.O.W.)
(UNIMPROVED)

EXIST. SAN M.H.
RIM=48.92'
FL 12" PVC(W)=33.62'
FL 12" PVC(E)=33.49'

EXIST. SAN M.H.
RIM=49.33'
FL 12" PVC(W)=32.62'
FL 12" PVC(E)=32.44'

N 88°24'12" E 1457.13'



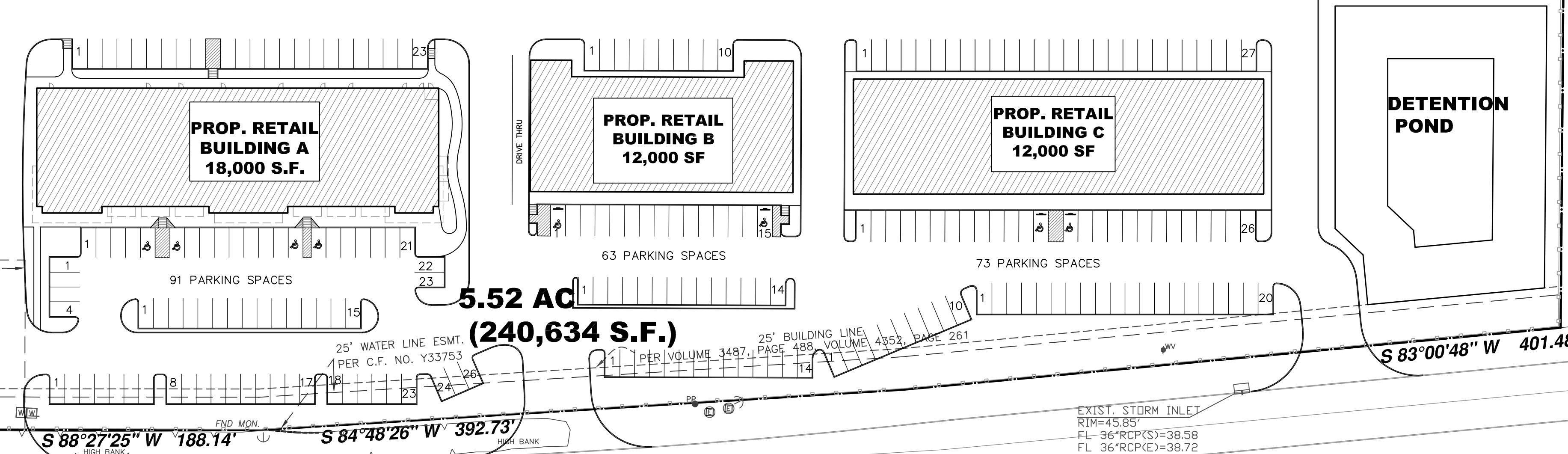
SOUTH WAYSIDE DRIVE
(50.0' PUBLIC R.O.W.)
(ASPHALT)

N 01°32'43" W 566.69'

S 01°08'49" E 772.92'

N 88°27'25" E 472.02'
S 88°27'25" W 472.02'

N 01°32'35" W 267.94'



CALLED 2.5590 ACRES
H.C.C.F. NO. 20160007394

EXIST. STORM INLET
RIM=45.63'
FL 36" RCP(E)=36.51'

EXIST. CATCH BASIN
RIM=41.62'
FL 36" RCP(W)=37.12'

EXIST. STORM INLET
RIM=45.49'
FL 36" RCP(N)=36.88'
FL 36" RCP(S)=36.96'

EXIST. STORM INLET
RIM=45.85'
FL 36" RCP(S)=38.58'
FL 36" RCP(E)=38.72'

S 88°27'25" W 188.14'

S 84°48'26" W 392.73'

S 83°00'48" W 401.48'

BELTWAY 8 (SAM HOUSTON PARKWAY)
(RIGHT OF WAY WIDTH VARIES)

APARTMENTS: 17.48 AC.

NO. OF UNITS:
24 BUILDINGS x 14
= 336 units

PARKING SPACES:
REQUIRED: 1.50 / UNIT
336 x 1.50 = 504 SPACES

PROVIDED: 504 SPACES

RETAIL: 5.52 ACRES

A+B+C = 42,000 S.F.

PARKING SPACES:
REQUIRED: 5 / 1,000 S.F.
42 x 5 = 210 SPACES

PROVIDED: 91+63+73
= 227 SPACES

RESTRICTED RESERVE 'A'
J & JM INDUSTRIAL PARK
AMENDING PLAT NO. 1
VOLUME 571, PAGE 008 H.C.M.R.